

WACKER DRIVE CONSTRUCTION PROJECT ADVISORY



Tuesday, March 30, 2010

INFORMATION PROVIDED BY CDOT AND THE CITY OF CHICAGO

Roadway closures related to the first of four major roadway projects on and around Wacker Drive are scheduled to begin as follows:

- Closures will start Wednesday, March 31 at 6pm on WB Congress from Clark to Wells to reduce to two lanes.
- At 9pm on March 31st, additional closures/reductions to close ramps and put traffic in a two lanes inbound and one lane outbound at Congress over the Chicago River
- Lower Wacker from Harrison to Randolph will be down to one local traffic lane in each direction. Expect delays during the AM rush on Thursday, April 1.

The Illinois Department of Transportation (IDOT) will close lanes on the Congress Parkway Bridge as the bridge reconstruction begins. Congress will be reduced to two lanes inbound and one lane outbound.

In conjunction with that closure, three areas along Wacker Drive will be impacted:

- ***Entrance/exit ramps to and from Wacker Drive and Congress Parkway will close.***

Vehicles will not be able to exit inbound Congress onto Upper or Lower Wacker Drive; however, the Congress exit to Franklin Street will remain open for several weeks (until the start of the Wacker Drive/Congress Interchange work.) Vehicles on Lower Wacker will not be able to access Congress Parkway.

Vehicles on inbound Congress will be able to access northbound Lower Wacker by using the local access detour route: take southbound Wells Street to westbound Harrison to northbound Lower Wacker Drive. Trucks and cars will be able to go around the barricades to access Lower Wacker.

- ***Lower Wacker Drive will be reduced to one lane in each direction, and will be intended for local traffic only.***

Local traffic includes vehicles that use the garages, deliveries and service providers to the properties along Wacker Drive. Note that in some areas, traffic will be diverted to the service drives around work zones.

- ***Median access ramps to and from Upper and Lower Wacker Drive from Van Buren to Randolph will be closed on or about April 5.***

The local detour for these will be Franklin Street north to Lake Street to Post Place to Lower Wacker Drive.

These changes will remain in place through 2012.

The Wacker work in 2010 will entail lower-level utility relocation work and reconstruction of the Wacker/Congress interchange. Attached for your reference are maps showing the local traffic access points and the Lower Wacker traffic configuration for the first few months of the project.

The upper- and lower-level reconstruction is scheduled to begin in early 2011 and last through 2012.

In addition to the Wacker Drive Project, three other major projects will take place in the area:

- Eisenhower Expressway Resurfacing
- Congress Parkway Bridge Reconstruction
- Congress Parkway Streetscape

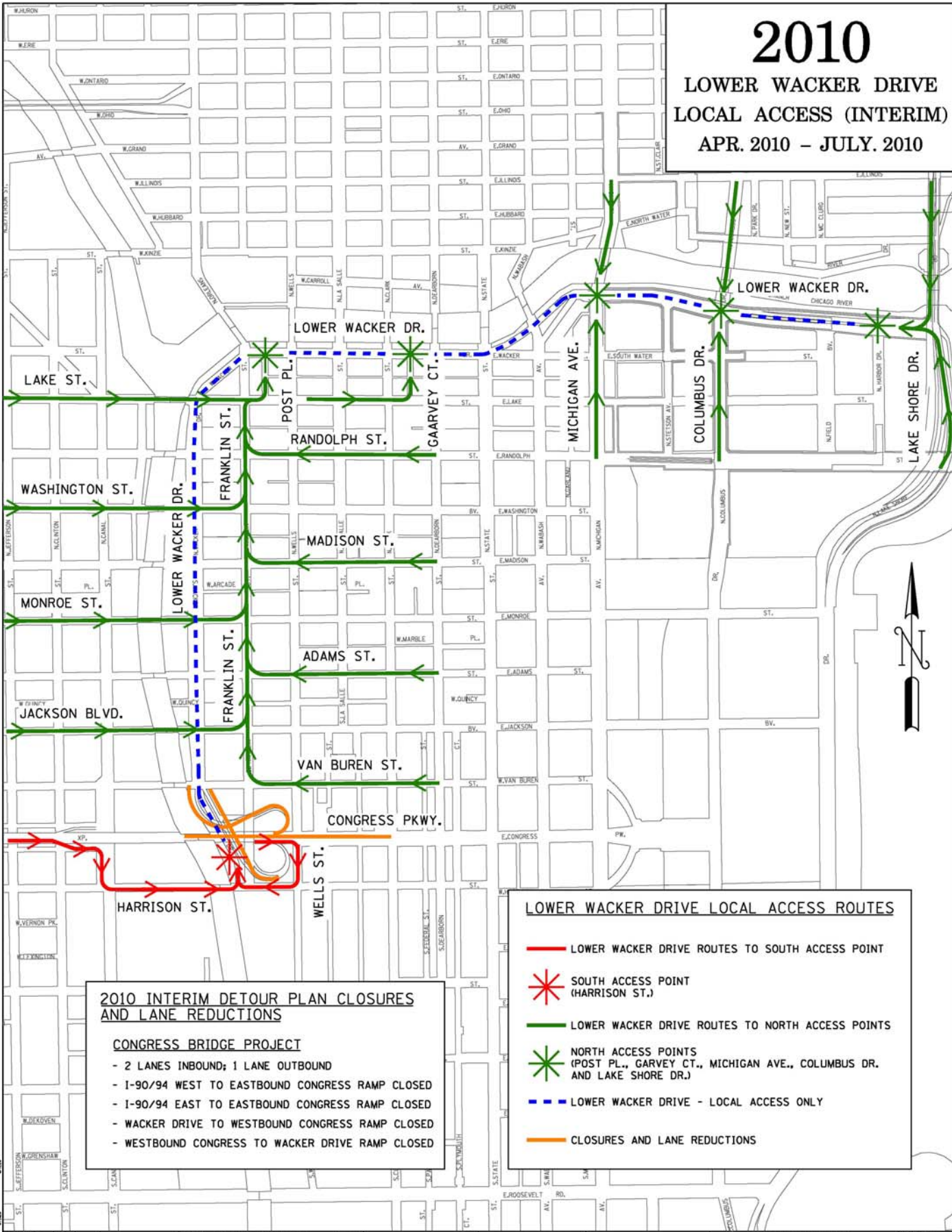
Additional Resources on these projects are available through the following links:

- For more information on the Wacker Drive project, visit www.wackerdrive.org
- For more information on the IDOT projects, visit www.dot.state.il.us

2010

LOWER WACKER DRIVE LOCAL ACCESS (INTERIM)

APR. 2010 - JULY 2010



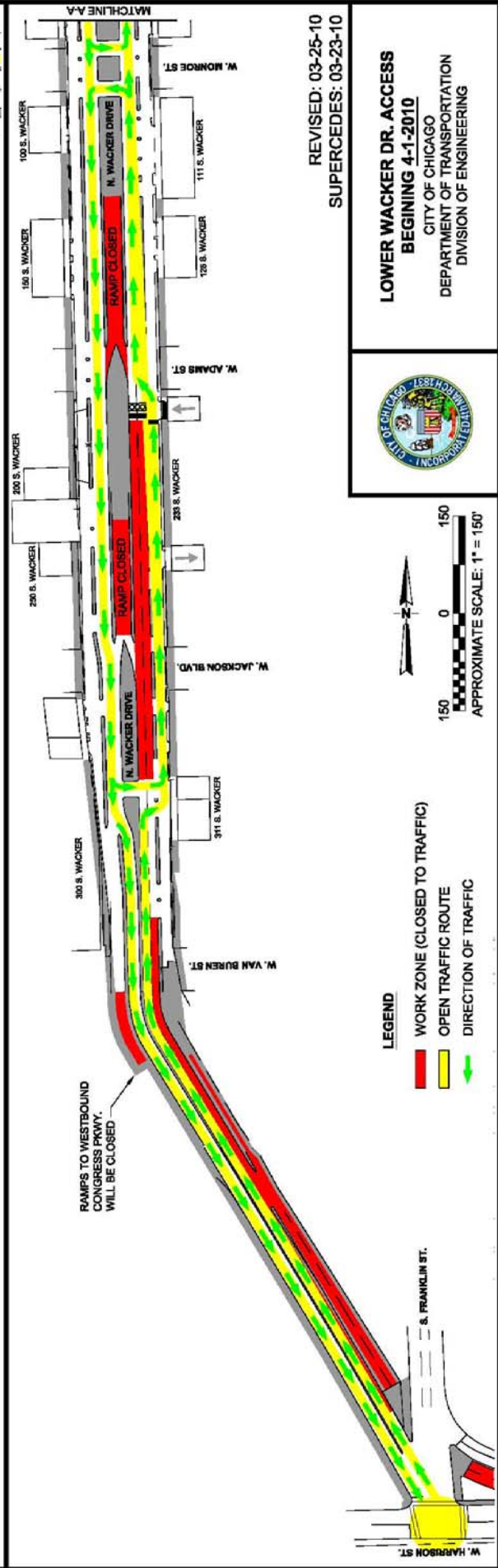
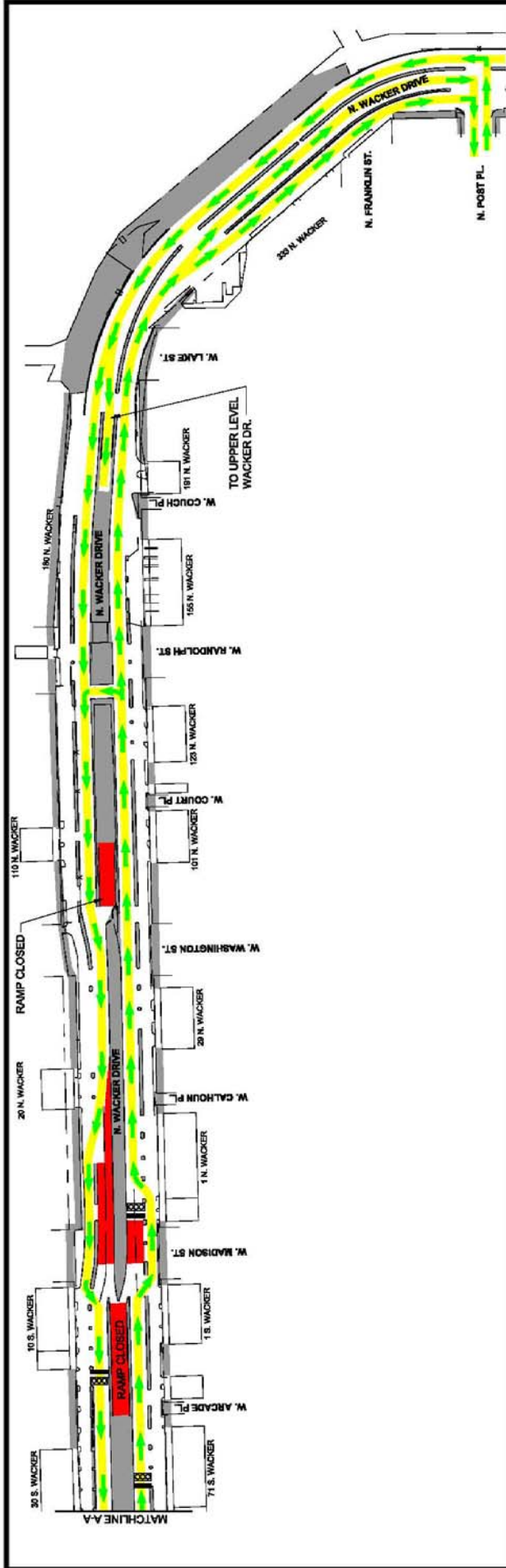
2010 INTERIM DETOUR PLAN CLOSURES AND LANE REDUCTIONS

CONGRESS BRIDGE PROJECT

- 2 LANES INBOUND; 1 LANE OUTBOUND
- I-90/94 WEST TO EASTBOUND CONGRESS RAMP CLOSED
- I-90/94 EAST TO EASTBOUND CONGRESS RAMP CLOSED
- WACKER DRIVE TO WESTBOUND CONGRESS RAMP CLOSED
- WESTBOUND CONGRESS TO WACKER DRIVE RAMP CLOSED

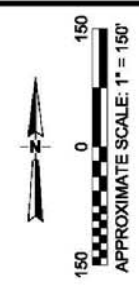
LOWER WACKER DRIVE LOCAL ACCESS ROUTES

- LOWER WACKER DRIVE ROUTES TO SOUTH ACCESS POINT
- SOUTH ACCESS POINT (HARRISON ST.)
- LOWER WACKER DRIVE ROUTES TO NORTH ACCESS POINTS
- NORTH ACCESS POINTS (POST PL., GARVEY CT., MICHIGAN AVE., COLUMBUS DR. AND LAKE SHORE DR.)
- LOWER WACKER DRIVE - LOCAL ACCESS ONLY
- CLOSURES AND LANE REDUCTIONS



REVISED: 03-25-10
 SUPERCEDES: 03-23-10

LOWER WACKER DR. ACCESS
BEGINNING 4-1-2010
 CITY OF CHICAGO
 DEPARTMENT OF TRANSPORTATION
 DIVISION OF ENGINEERING



- LEGEND**
- WORK ZONE (CLOSED TO TRAFFIC)
 - OPEN TRAFFIC ROUTE
 - DIRECTION OF TRAFFIC